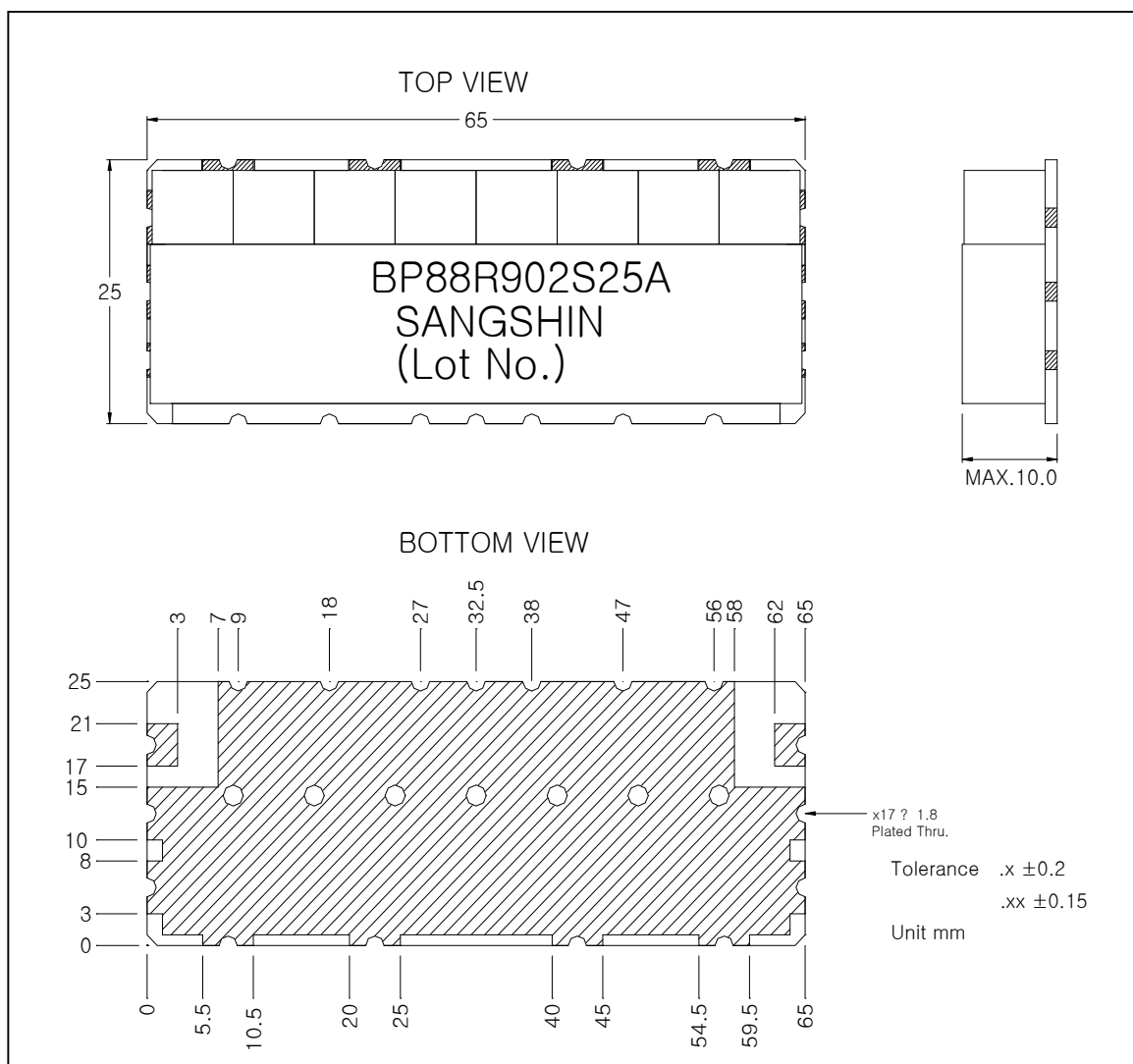


Part No. **BP88R902S25A**

1. Electrical Specifications.

ITEM	Specifications
Center Frequency (= Fc)	902.5MHz
Pass Band-width (=BW)	25 MHz
I.L in BW	4.0 dB max.
Ripple in BW	1.0 dB max.
V.S.W.R in BW	2.0 max.
Attenuation	60 dB min. @ Fc ± 32.5 MHz
In/Out Impedance	50 Ω
Operation Temperature	-30°C ~ +85°C

2. Dimensions.



3. Data

